

INSIDE

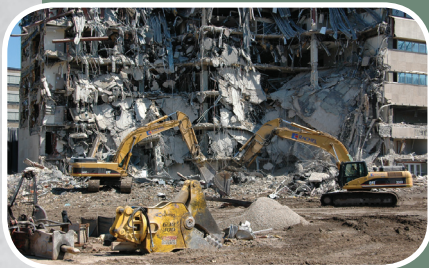
Site-K
Construction Zone
page 1



Industry News
page 7



Association News
page 38



Site Prep/
Landscaping Issue:
Clear Ye, Clear Ye



Coming August 2011

Focus ~ Bridge Construction/
Preservation
Maintenance ~ Fuel System
Safety or Product Focus ~
Equipment Safety
Management ~ Succession
Planning



Volume 101 Number 6 • JUNE 2011

western builder

Edition

Serving Minnesota, North Dakota, South Dakota and Wisconsin
Since 1902

DAKOTA INTERTEK CORP. KEEPS THE MILWAUKEE COUNTY ZOO BEAUTIFUL

By Peter Leviton

An anonymous Navajo Indian poem is inscribed on the overhead of the covered walkway leading to the Primate Building. It sets the stage for what Milwaukee Zoo visitors are going to experience:

*With Beauty above me, may I walk.
With Beauty below me, may I walk.
With Beauty all around me, may I walk.*

Thanks to the hard work of Dakota Intertek Corp., walking in the beauty of the zoo has become a lot easier.

The walk started in 1892 as a miniature mammal and bird display in Milwaukee's downtown Washington Park. The Milwaukee County Zoo expanded outgrew its original site and moved to its 200-acre present location on West Blue Mound Road in 1958. The zoo is home to more than 2,275 mammals, birds, fish, amphibians and reptiles – more than 330 different species in all. Thousands of people visit the zoo every week and it is one of Wisconsin's premiere attractions. As a result of hard work and dedication it is considered one of the country's finest zoological attractions.

Popularity has its price. With all the traffic the roads and paths took a considerable beating; the old asphalt roads and walkways had become birdbaths and mosquito farms as they sank and filled with water. Dakota Intertek Corp. was hired to replace the old asphalt not only for decorative reasons, but for water drainage as well. On some of the roads, asphalt, rock and dirt were excavated to make way for eight inches of #2 stone, four inches of #1 stone, one and a half inches of bedding chips, that was then topped off with decorative pavers.

The zoo's renovated terrace area is being redesigned to accommodate live entertainment and corresponding spectators. The stone base will be two ft. thick before being compacted and covered with pavers. This will allow rainwater to drain through the pavers and stone into a drainage layer, where it will be directed into a water garden with aquatic plant life.



New Holland C185 collecting gravel for the job.

Terrible Twister Tortures Tuscaloosa



The tornado that devastated the home of Alabama's Crimson Tide has been featured on the news and front pages of hundreds of newspapers across the country. It was one of the largest in the country's history. How do you measure the size of a tornado? Wind force, velocity, weather bureau strength ratings, physical size, distance traveled, dollar volume of damage, number of buildings destroyed, number of people missing, number of people directly affected and the number of people who died, are all factored into the equation.

Continued on page 4 »

Continued on page 2 »



Get it done from one source: your Volvo dealer.

Aring
EQUIPMENT COMPANY, INC.



Let's Work.

13001 W. Silver Spring Dr., Butler, WI - 262-781-3770
www.aringequipment.com

ACIP
1200 South Madison Ave Suite 1L20
Indianapolis, Indiana 46225
CHANGE SERVICE REQUESTED

Presorted Standard
U.S. Postage
PAID
Lebanon Junction, KY
Permit # 737

Dakota Intertek Corp. Keeps the Milwaukee County Zoo

BEAUTIFUL





In addition to the surface construction, Dakota Intertek is also reinforcing a settling Penguin House walkway with 168 supports; installing skylights in the Primate House; erecting a pvc fence by the horse exhibit; constructing awnings for the polar bears and other on going projects.

To help make the jobs a lot easier, Dakota Intertek turned to local area construction equipment dealers to provide them with the right equipment for each of these varied jobs. A New Holland C185 skid steer loader was used to place the stone. Andy Renner, Dakota Intertek's skid steer operator said, "This loader has great visibility and plenty of power – two things that we needed so we could see where we were going and have the power to get the job done. It's a very nice machine and I've worked with a lot of them. It's held up really well and we've put a lot of hours in it."

Renner adds, "Milwaukee Tractor & Equipment, where the skid steer was purchased, always has air and oil filters or anything else I need. They know who I am and what I'm doing with the equipment. They remember you, which is rare these days."

The CAT 308D CR was the perfect fit for this job.

Page 3: Excavating around pre-existing cables is just one of the obstacles the contractors came across.



“We’ve stayed lean and our overhead isn’t outrageous,” added Todd Ormiston, construction manager for Dakota Intertek. “We have just enough of the right equipment and if we need more, we go out and rent it.” To illustrate, a Caterpillar 308D CR Mini Hydraulic Excavator was rented from FABCO and was “sized just right for this job,” said Tom Marach, Dakota Intertek senior project manager. “Anything else would be overkill,” added Ormiston. “FABCO has a lot of stuff and the resources to get equipment here. They always seem to be able to supply the equipment we need.”

“We are so fortunate to be busy these days,” said Ormiston. “A lot of our base customers are repeat customers. We don’t do a lot of different things, but what we consider as our core work, we do it very well. Every job is an interview. You have to do well or you won’t get the next job.”

Established in 1994, Dakota Intertek is a government service provider with an emphasis on engineering and contracting. Dakota Intertek specializes in earth work, landfill projects, landscaping, sewer and water, demolition and new construction. The company has been ranked as one of the top twenty minority owned, EBE certified contracting companies in the state of Wisconsin for the past five years. Located in New Berlin, Wis., their Web site is www.dakotaintertekcorp.com. 🛡️



Todd Ormiston, construction manager.

Top photo: The New Holland C185 spreads out the #2 stone layer.